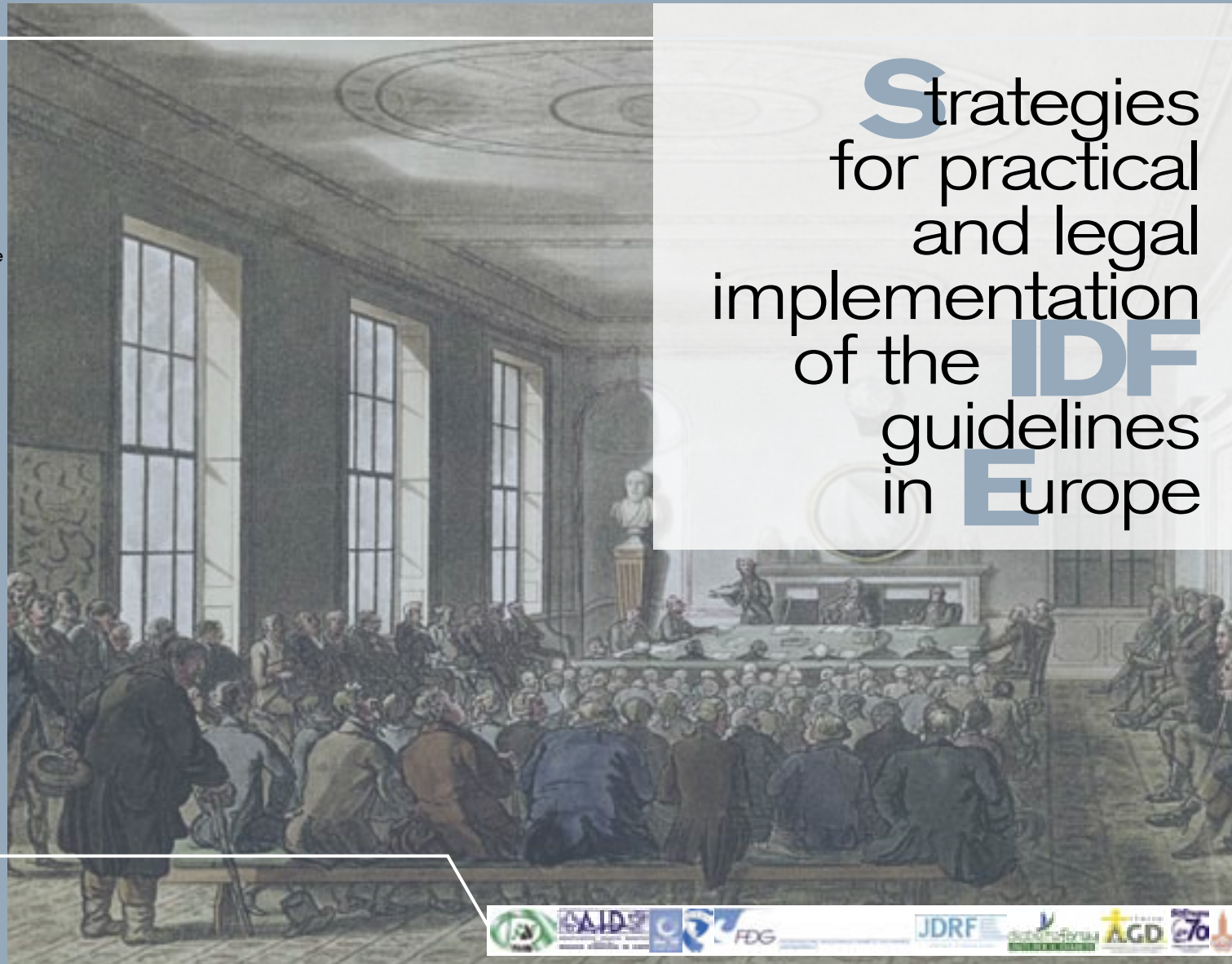




## FACULTY

A. Aprile	General Manager INRCA Ancona
A. Arcangeli	President AMD
P. Cavallo Perin	President SID
A. Ceriello	Chairman IDF Guidelines on the Management of Post Meal Glucose
R. Colagiuri	Chairman IDF Task Force on National Diabetes Policy and Action
S. Colagiuri	Chairman IDF Development Committee of Guidelines
H. Kolb	Chairman IDF Guidelines on the 'Self Glucose Monitoring'
F. Lattanzio	Scientific Director INRCA Ancona
M. Massi Benedetti	Vice President IDF Chairman IDF Guidelines on the Oral Health in Diabetes
JC. Mbanya	President-Elect IDF
G. Roglic	WHO Regional Office for Europe
E. Standl	Co-Chairman ESC-EASD Guidelines on Diabetes and CVD

# Strategies for practical and legal implementation of the **IDF** guidelines in **Europe**



## ORGANIZING SECRETARIAT

ECM Service srl  
 Via T. Pendola, 7/1  
 16143 - Genova - Italy  
 Tel. +39 010 505385  
 +39 010 5298168  
 Fax +39 010 504704  
 website: [www.ecmservice.it](http://www.ecmservice.it)  
 e-mail: [e.cristofori@ecmservice.it](mailto:e.cristofori@ecmservice.it)



Ancona, March 12<sup>th</sup>-14<sup>th</sup>, 2009  
[www.ecmservice.it/idfguidelines](http://www.ecmservice.it/idfguidelines)

# March 12

- 15 15 President IDF Europe  
**Welcome**
- 15 30 A. Aprile, General Manager INRCA Ancona  
**Welcome**
- 15 40 A. Arcangeli, President AMD  
**Welcome**
- 15 50 P. Cavallo Perin, President SID  
**Welcome**
- 16 00 F. Lattanzio, Scientific Director INRCA Ancona  
**Diabetes and Aging: The commitment of INRCA**
- 16 15 A. Ceriello, Chairman IDF Guidelines on the Management of Post Meal Glucose  
**Objectives of the Meeting**

**Chairmen: A. Arcangeli, P. Cavallo Perin**

- 16 30 JC Mbanya, President-Elect IDF  
**UN Resolution**
- 17 00 G. Roglic, for the WHO Regional Office for Europe  
**Chronic Diseases Prevention and Management**
- 17 30 R. Colagiuri, Chairman IDF Task Force on National Diabetes Policy and Action  
**Building National Programs around Diabetes Guidelines**
- 18 00 S. Colagiuri, Chairman IDF Development Committee of Guidelines  
**IDF Global Guidelines**
- 18 30 Discussion
- 20 00 Welcome reception

# March 14

**Chairmen: M. Massi Benedetti, A. Ceriello**

09 00/12 00

Plenary discussion, with a final document highlighting global and country specific barriers, both practical and legal, for the implementation of each guideline

12 30/14 00

Farewell lunch

# March 13

**Chairmen: S. Colagiuri, JC Mbanya**

- 09 00 E. Standl, Co Chairman EASD-ESC guidelines on diabetes and CVD  
**EASD-ESC Guidelines on Diabetes and CVD**
- 09 30 A. Ceriello, Chairman IDF Guidelines on the Management of Postmeal Glucose  
**IDF Guidelines on Management of postmeal Glucose**
- 10 00 H. Kolb, Chairman IDF Guidelines on the Self Glucose Monitoring  
**Guidelines on Self Glucose Monitoring**
- 10 30 M. Massi Benedetti, Vice President IDF  
Chairman IDF Guidelines on the Oral Health in Diabetes  
**Guidelines on Oral Health in Diabetes**
- 11 00 Coffee Break

*5 Rotation working groups: 1 for guideline. Participants will be divided in sub-groups. Each working group chaired by the presenter of each guideline plus a writer taking note of the discussion.*

*Aim: collect practical and legal barriers for the implementation of the guidelines*

- |       |               |       |  |
|-------|---------------|-------|--|
| 11 30 | Working Group | 15 30 | Working Group  |
| 12 30 | Working Group | 16 30 | Working Group  |
| 13 30 | Lunch         | 17 30 | Chairs will meet to define the document for the general assembly |
| 14 30 | Working Group |       |  |

*This document will be used by the IDF Europe to build:*

- a specific task force as well as specific actions for the implementation of the guidelines and the UN resolution in the different countries of Europe
- planning of country specific education programs